

KEF
INNOVATORS IN SOUND



C Series

An unrivalled pedigree

For decades audiophiles around the world have revered KEF (Kent Engineering and Foundry) for its innovative, high-performance loudspeakers. The company was founded in 1961 by Raymond Cooke OBE (1925-1995), a former BBC electrical engineer, widely acknowledged in the audio industry as a leading authority in transducer technology.

The pioneering inventiveness of KEF loudspeakers was undeniable. During the 1960s and early 1970s, KEF's reputation was further enhanced by its outstanding performance. From the mid 1960s, KEF collaborated with the BBC in developing new materials for high-end loudspeakers - the results being embodied in the classic LS3/5a monitor which generated worldwide sales of more than 100,000 systems.

KEF's Uni-Q® technology was introduced in 1988 and since then KEF has maintained its position at the forefront of loudspeaker and home theatre systems.

The core values of KEF: innovation, quality and performance have ensured that KEF has one of the best international reputations for audio excellence.



Incredible performers – whatever your taste...

New C Series is the product of a multi award-winning heritage of daring design, brilliantly executed. The range is engineered for a perfect tonal match between every model, so you can combine them however you please. Acoustically the C Series provides the sort of clarity, definition and spatial precision normally associated with speakers of a much higher price. Power handling is uniformly excellent, so they can be used with virtually any amplifier and whether used for music, movies or games, the sheer quality of the sound they produce is equally captivating.

C Series technologies



Aluminium dome tweeter with 'tangerine' waveguide

The same 19mm (0.75in.) tweeter reproduces vocals with spellbinding realism – the unique 'tangerine' waveguide disperses its sweet natural clarity evenly throughout the room and provides excellent protection from straying fingers.



Ultra-rigid enclosures

The sound you hear is untainted by any internal resonance from the sturdily constructed cabinet, thanks to careful internal bracing and a dense dual-layered front baffle system.



Gold-plated terminals

The exceptional acoustic definition you experience depends on the recorded signal being perfectly transmitted, so the twinned binding posts of the C Series are gold-plated.



Dual signal transmission

To optimize acoustic resolution, there are dual sets of binding posts to accommodate bi-wiring, or, for the cleanest possible response right across the frequency range, bi-amplification.



Forward-firing slot port

Bass response is enhanced by a frontal slot port carefully contoured to minimise any unwanted turbulence that might otherwise colour the well-defined output of the bass drivers.



Invisible keyhole wall mounting system

With no ugly brackets to spoil the clean lines, it couldn't be easier to secure your C Series satellites (upright or horizontally) to any suitable vertical surface using the ingeniously neat keyhole mounting point built into the back of each cabinet.



C7 Large floorstander

If you're serious about sound, you'll find the C7 an intensely satisfying companion. With KEF's phenomenal 19mm (0.75in.) tweeter and 'tangerine' waveguide, complemented by a pair of large 165mm (6.5in.) bass drivers, an intricate and disarmingly natural three-dimensional sound image floods the room. As with all of the new C Series models, the highly rigid cabinet is vented by a carefully contoured front port to provide a wide and powerful bass.



C5 Slim floorstander

A compact yet solidly built floorstander, the C5 combines the latest 19mm (0.75in.) tweeter and 'tangerine' waveguide with two 130mm (5.25in.) bass drivers in a slim, internally braced cabinet. Meticulously tuned crossovers ensure seamless transitions and dual binding posts allow bi-wiring or bi-amplification. Whatever the genre, whatever the medium, the resulting sonic picture is open, fluent and involving.



C3 Large bookshelf

Clear, confident and natural sounding, the C3 boasts KEF's 130mm (5.25in.) bass driver for impressively extended low frequency response to complementing the seductive realism of the sophisticated 19mm (0.75in.) tweeter and 'tangerine' waveguide. The resulting soundscape is warm, rich in detail and compellingly three-dimensional, whether you're enjoying a favourite track or watching a movie.



C1 Compact bookshelf

The C1 pairs the superbly accurate 19mm (0.75in.) tweeter and 'tangerine' waveguide from the latest Q Series with a slot-ported 100mm (4in.) mid-range / bass cone. Both sit on a dense two-layer front baffle system to deliver a complex, profoundly realistic and spatially accurate soundscape. With excellent power handling and a carefully tuned crossover, the C1 delivers a generously full performance that belies its discreet appearance and modest size.



C6LCR Centre channel

The vital centre channel is at the heart of any 5.1 surround sound set-up except that the remarkable C6LCR can be used as front and rear units too. The latest 19mm (0.75in.) aluminium tweeter with 'tangerine' waveguide is flanked by two 130mm (5.25in.) LF drivers to produce both a centre speaker with precise and captivating vocals and a powerful 'LCR' adding depth and dynamics to any 5.1 system.

C4 Powered subwoofer

Unobtrusively handsome, yet powerful, the new C4 subwoofer provides an incredible bass output with immaculate control. With a 200W on-board amplifier driving a 200mm (8in.) front-firing bass driver, the C4 is engineered to minimise distortion as meticulously as the rest of the range and adds effortless depth and weight to any performance.

Specifications

	C7 Floorstander	C5 Floorstander	C3 Bookshelf
Design	Two-way bass reflex	Two-way bass reflex	Two-way bass reflex
Drive units	19mm (0.75in.) aluminium HF 2 x 165mm (6.5in.) LF	19mm (0.75in.) aluminium HF 2 x 130mm (5.25in.) LF	19mm (0.75in.) aluminium HF 130mm (5.25in.) LF
Frequency response	36Hz - 40kHz	41Hz - 40kHz	54Hz - 40kHz
Crossover frequency	2.5kHz	2.5kHz	2.5kHz
Amplifier requirements	15 - 200W	15 - 150W	10 - 125W
Sensitivity (2.83V/1m)	91dB	90dB	88dB
Maximum output	113dB	111dB	108dB
Impedance	8Ω	8Ω	8Ω
Magnetic shielding	Yes	Yes	Yes
Weight	13.4kg (29.5lbs)	11.5kg (25.3lbs)	4.4kg (9.7lbs)
Dimensions (H x W x D)	965 x 203 x 286 mm (38 x 8 x 11.25 in.)	915 x 177 x 260 mm (36 x 7 x 10.25 in.)	290 x 177 x 256 mm (11.4 x 7 x 10 in.)
Plinth dimensions (W x D)	273 x 372 mm (10.75 x 14.65 in.)	248 x 322 mm (9.7 x 12.7 in.)	N/A

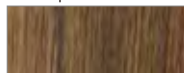
	C1 Bookshelf	C6LCR Left centre right	C4 Subwoofer
Design	Two-way bass reflex	Two-way acoustic suspension	Powered bass reflex
Drive units	19mm (0.75in.) aluminium HF 100mm (4in.) LF	19mm (0.75in.) aluminium HF 2 x 130mm (5.25in.) LF	1 x 200mm (8in.) LF
Frequency response	65Hz - 40kHz	65Hz - 40kHz	29Hz - 140Hz
Crossover frequency	2.5kHz	2.5kHz	N/A
Amplifier requirements	10 - 100W	10 - 150W	N/A
Amplifier	N/A	N/A	200W built-in Class-D
Sensitivity (2.83V/1m)	87dB	90dB	N/A
Maximum output	106dB	111dB	108dB
Low pass filter	N/A	N/A	Variable 40Hz - 140Hz, 4th-order
Low level signal inputs	N/A	N/A	RCA phono socket
Impedance	8Ω	8Ω	N/A
Magnetic shielding	Yes	Yes	Yes
Weight	3.2kg (7lbs)	6.2kg (13.7lbs)	12.2kg (27.0lbs)
Power requirements	N/A	N/A	100 - 240V ac ~, 50 - 60Hz
Power consumption	N/A	N/A	200VA
Dimensions (H x W x D)	260 x 150 x 221 mm (10.25 x 5.9 x 8.7 in.)	177 x 430 x 211 mm (7 x 16.9 x 8.7 in.)	345 x 320 x 377 mm (13.6 x 12.6 x 14.9 in.)

Finishes

Black ash



European walnut





United Kingdom
 GP Acoustics (UK) Limited
 Ecclestone Road, Tovil
 Maidstone, Kent
 ME15 6QP U.K.
 Tel: +44 (0) 1622 672261
 Fax: +44 (0) 1622 750653
 Email: info@kef.com

China
 GP Acoustics (China) Limited
 Unit 4910
 Diwang Commercial Centre
 Shenzhen, China 518008
 Tel: +86 (755) 8246 0746
 Fax: +86 (755) 8246 0125
 Email: info.prc@gpe-hkg.com

Europe (EMEA)
 GP Acoustics GmbH
 Am Brambusch 22
 44536, Lünen
 Deutschland
 Tel: +49 (0) 231 9860-320
 Fax: +49 (0) 231 9860-330
 Email: sales@gpaeu.com

France
 GP Acoustics (France) SAS
 39 Rue des
 Granges Galand - BP60414
 37554 Saint Avertin CEDEX, France
 Tel: +33 (0) 2 47 80 49 01
 Fax: +33 (0) 2 47 27 89 64
 Email: info.france@kef.com

KEF and Uni-Q are registered trademarks.
 Uni-Q and other KEF technologies are
 protected by worldwide patents. All text and
 image copyrights reserved. KEF reserves the
 right, in line with continuing research and
 development, to amend or change
 specifications. E&OE.

Hong Kong
 GP Acoustics (HK) Limited
 6F, Gold Peak Building
 30 Kwai Wing Road
 Kwai Chung, N.T., Hong Kong
 Tel: +852 2410 8188
 Fax: +852 2401 0754
 Email: info@gpacoustics.com.hk

Japan
 KEF Japan
 1-11-17
 Honcho, Koganei-city
 Tokyo, Japan. 184-0004
 Tel: +81 (0) 42-388-2030
 E-mail: info@kef.jp

Taiwan
 GP Acoustics (Taiwan) Limited
 Room 4B, 5F, 415
 Xingyi Road Sec 4
 Taipei 110, Taiwan
 Tel: +886 (2) 2723 0868
 Fax: +886 (2) 2723 0818
 Email: info@gpacoustics.com.tw

USA
 GP Acoustics (US) Inc.
 10 Timber Lane
 Marlboro
 New Jersey 07746 U.S.A.
 Tel: +1 (732) 683 2356
 Fax: +1 (732) 683 2358
 Email: sales@kefamerica.com

KEF
 INNOVATORS IN SOUND

www.kef.com